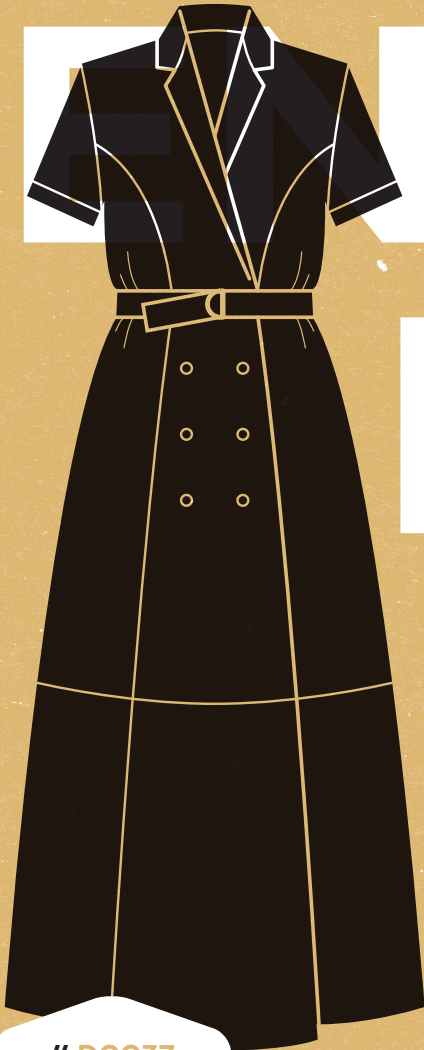


## CUTTING LAYOUTS

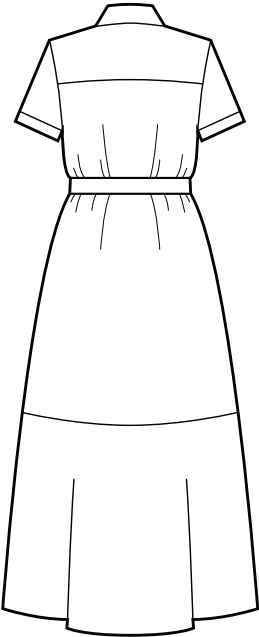
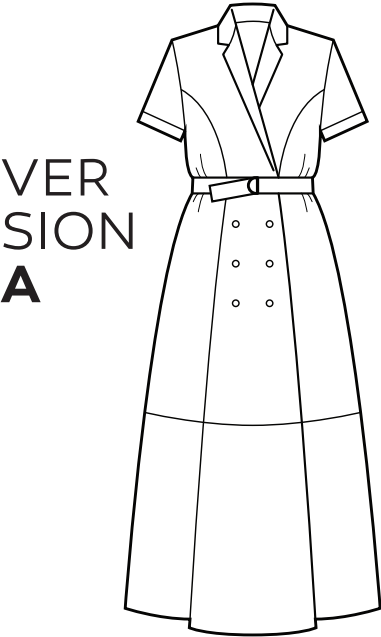


# D0037



# PASSIFLORE

# MEASUREMENTS AND SUPPLIES



## FABRIC

**Recommended fabrics:** rayon, tencel, cupro, linen-rayon and lightweight linen, silk and cotton crepe, silk satin, cotton lawn.

Allow extra fabric to match stripes or plaids.

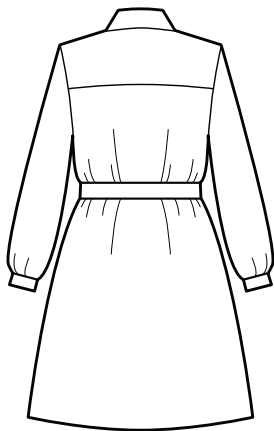
Size	60" wide	45" wide
34-36	3 <sup>5</sup> / <sub>8</sub> yds	4 <sup>7</sup> / <sub>8</sub> yds
38-40	3 <sup>7</sup> / <sub>8</sub> yds	5 <sup>1</sup> / <sub>4</sub> yds
42-44	4 <sup>1</sup> / <sub>2</sub> yds	6 <sup>1</sup> / <sub>2</sub> yds
46-48	4 <sup>5</sup> / <sub>8</sub> yds	6 <sup>5</sup> / <sub>8</sub> yds
50-52	4 <sup>3</sup> / <sub>4</sub> yds	7 yds

## SUPPLIES

- 1 yard lightweight fusible interfacing
- eight <sup>5</sup>/<sub>8</sub>" buttons
- one <sup>5</sup>/<sub>8</sub>" flat button
- two 1 <sup>1</sup>/<sub>2</sub>" D-Rings

# MEASUREMENTS AND SUPPLIES

## VER SION B



### FABRIC

**Recommended fabrics:** rayon, tencel, cupro, linen-rayon and lightweight linen, silk and cotton crepe, silk satin, cotton lawn.

Allow extra fabric to match stripes or plaids.

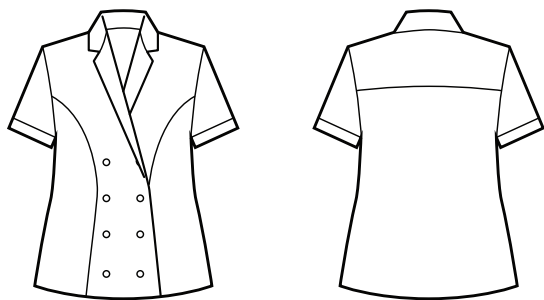
Size	60" wide	45" wide
34-36	2 <sup>7</sup> / <sub>8</sub> yds	3 <sup>7</sup> / <sub>8</sub> yds
38-40	3 yds	4 yds
42-44	3 <sup>5</sup> / <sub>8</sub> yds	5 <sup>5</sup> / <sub>8</sub> yds
46-48	3 <sup>5</sup> / <sub>8</sub> yds	4 <sup>7</sup> / <sub>8</sub> yds
50-52	3 <sup>3</sup> / <sub>4</sub> yds	5 <sup>3</sup> / <sub>8</sub> yds

### SUPPLIES

- 1 yard lightweight fusible interfacing
- eight <sup>5</sup>/<sub>8</sub>" buttons
- two <sup>1</sup>/<sub>2</sub>" buttons
- one <sup>5</sup>/<sub>8</sub>" flat button
- two 1 <sup>1</sup>/<sub>2</sub>" D-Rings

# MEASUREMENTS AND SUPPLIES

VER  
SION  
C



## FABRIC

**Recommended fabrics:** rayon, tencel, cupro, linen-rayon and lightweight linen, silk and cotton crepe, silk satin, cotton lawn.

Allow extra fabric to match stripes or plaids.

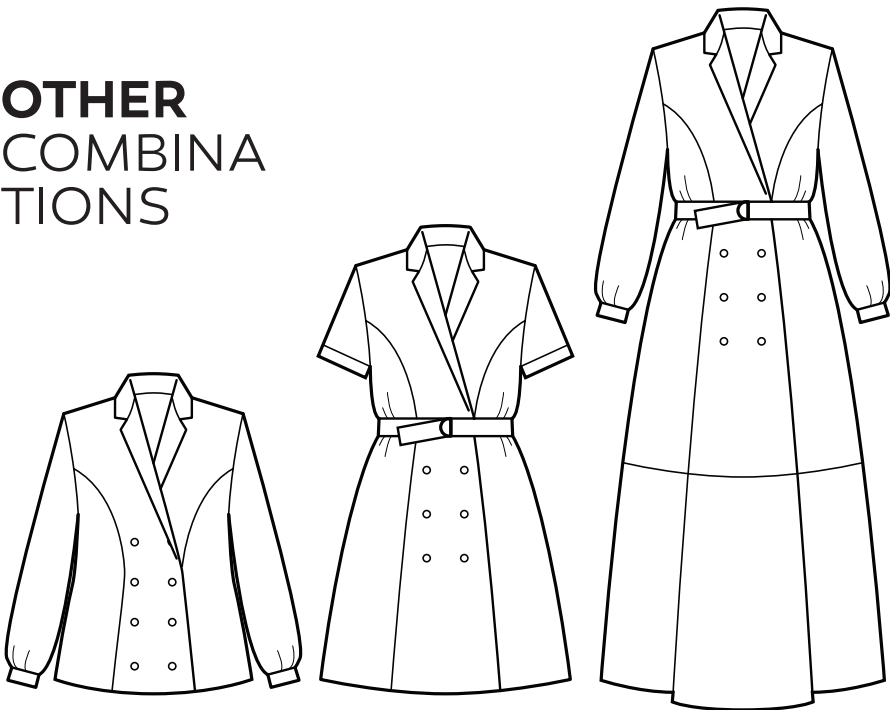
Size	60" wide	45" wide
34-36	1 <sup>3</sup> / <sub>4</sub> yds	2 <sup>1</sup> / <sub>8</sub> yds
38-40	1 <sup>7</sup> / <sub>8</sub> yds	2 <sup>1</sup> / <sub>4</sub> yds
42-44	2 <sup>1</sup> / <sub>8</sub> yds	3 <sup>1</sup> / <sub>8</sub> yds
46-48	2 <sup>1</sup> / <sub>4</sub> yds	3 <sup>3</sup> / <sub>8</sub> yds
50-52	2 <sup>3</sup> / <sub>8</sub> yds	3 <sup>3</sup> / <sub>8</sub> yds

## SUPPLIES

- 1 yard lightweight fusible interfacing
- eight <sup>5</sup>/<sub>8</sub>" buttons
- one <sup>5</sup>/<sub>8</sub>" flat button

# MEASUREMENTS AND SUPPLIES

## OTHER COMBINA TIONS

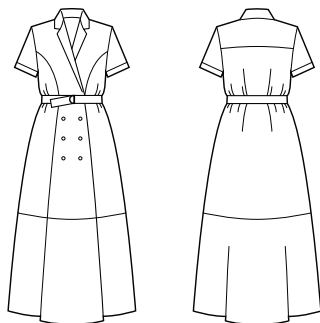


Size	60'' wide	45'' wide	60'' wide	45'' wide	60'' wide	45'' wide
34-36	2 yds	2 <sup>5</sup> / <sub>8</sub> yds	2 <sup>3</sup> / <sub>4</sub> yds	3 <sup>3</sup> / <sub>8</sub> yds	3 <sup>7</sup> / <sub>8</sub> yds	5 <sup>3</sup> / <sub>8</sub> yds
38-40	2 <sup>1</sup> / <sub>4</sub> yds	2 <sup>5</sup> / <sub>8</sub> yds	2 <sup>3</sup> / <sub>4</sub> yds	3 <sup>1</sup> / <sub>2</sub> yds	4 <sup>1</sup> / <sub>8</sub> yds	5 <sup>3</sup> / <sub>8</sub> yds
42-44	2 <sup>3</sup> / <sub>4</sub> yds	3 <sup>1</sup> / <sub>2</sub> yds	3 yds	4 <sup>5</sup> / <sub>8</sub> yds	4 <sup>5</sup> / <sub>8</sub> yds	6 <sup>7</sup> / <sub>8</sub> yds
46-48	2 <sup>5</sup> / <sub>8</sub> yds	3 <sup>1</sup> / <sub>2</sub> yds	3 <sup>3</sup> / <sub>4</sub> yds	4 <sup>3</sup> / <sub>4</sub> yds	4 <sup>3</sup> / <sub>4</sub> yds	7 yds
50-52	2 <sup>5</sup> / <sub>8</sub> yds	3 <sup>5</sup> / <sub>8</sub> yds	3 <sup>1</sup> / <sub>2</sub> yds	4 <sup>7</sup> / <sub>8</sub> yds	5 yds	7 <sup>1</sup> / <sub>8</sub> yds

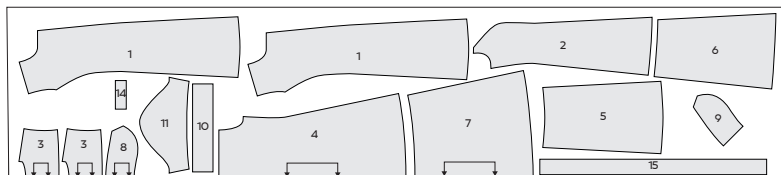
# CUTTING LAYOUT

Lay the pattern  
pieces on the  
fabric following  
the layout below.

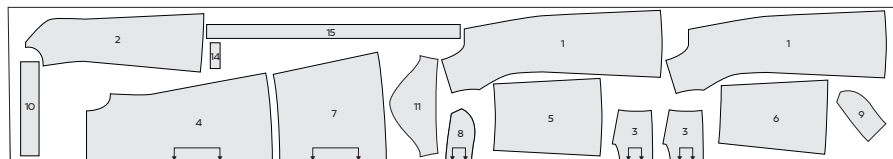
## VER SION A



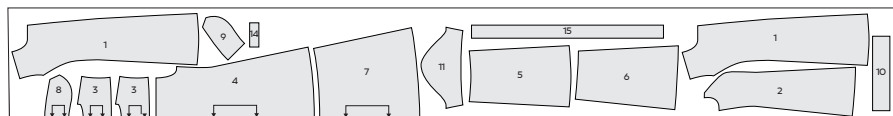
**34-40** 60" wide



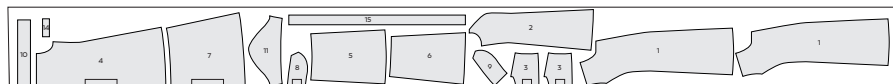
**42-52** 60" wide



**34-40** 45" wide



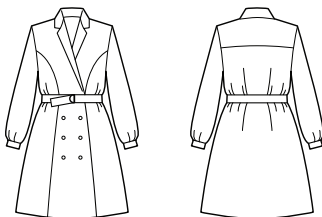
**42-52** 45" wide



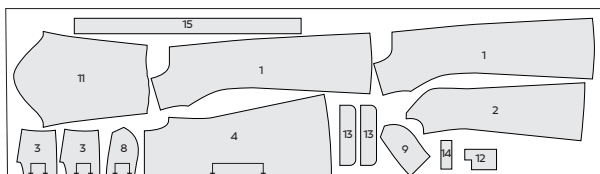
# CUTTING LAYOUT

—  
STANDARD  
5/8" SEAM  
ALLOWANCES  
ARE INCLUDED IN  
THE PATTERN.

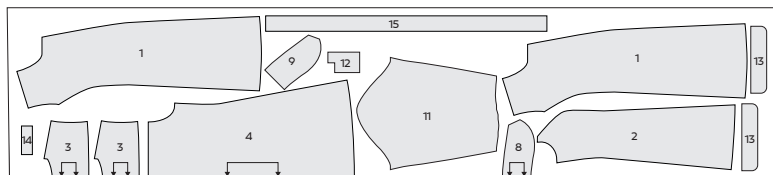
VER  
SION  
B



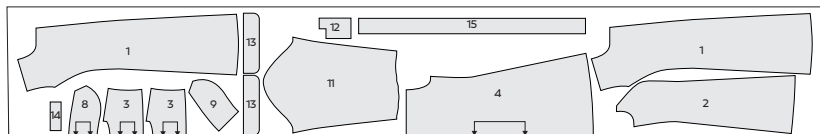
**34-40** 60" wide



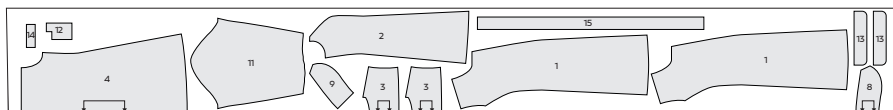
**42-52** 60" wide



**34-40** 45" wide



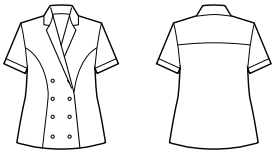
**42-52** 45" wide



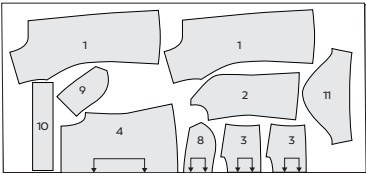
# CUTTING LAYOUT

—  
STANDARD  
5/8" SEAM  
ALLOWANCES  
ARE INCLUDED IN  
THE PATTERN.

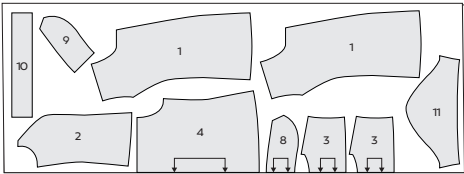
VER  
SION  
C



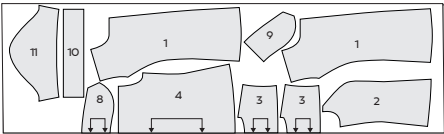
**34-40** 60" wide



**42-52** 60" wide



**34-40** 45" wide



**42-52** 45" wide

